

Welcome to the 2020 Show News  
- Digital Version!



The ULTIMATE industry reference

Dear Brush Experts,

Due to the recent Covid-19 pandemic, Interbrush 2020, as we all know, has been postponed until 2022. With Interbrush being the Olympics of the brush industry, bringing the newest developments and improvements to the world of brush making, we felt that the innovations of our major suppliers and machine makers should not go unannounced. It was therefore, decided that we should go ahead with the plan for our Show News (which would ordinarily been distributed to each visitor to Interbrush) but in digital form, and we are pleased to say that the overwhelming majority of our advertisers were keen to participate.

Despite the obvious disappointment of the postponement of this important brush industry calendar date, we are nonetheless thankful to hear encouraging reports from brush makers and suppliers across the world who continue to provide essential services in this time of crisis and have adapted their businesses in response to the current global need. We have full confidence in the resilience of brush manufacturing and look forward to working in support of our worldwide brush industry colleagues as we recover from this international disaster.

Links have been made from each advertisement and news article in our Show News to enable you to make immediate contact with the right person with which to discuss the featured products.

We are pleased to bring a little bit of the "Interbrush spirit" to your desk and we hope you like it.

Our warm regards for a healthy and successful back-to-work process.

The Brush Expert team



EDITORIAL CONTENTS		ADVERT CONTENTS	
Hahl-Perlon	3	Zahoransky	FC
Brushexpert Welcome	4	Hahl Perlon	IFC
Brushexpert a bit about us	5	Ebser	4
Zahoransky	6	FASS	8
Zahoransky	7	Cala Brush	9
Fass	8	Woehler	11
Cala Brush	9	Berkenhoff	13
Woehler	10	Bizzotto	17
Boucherie Borghi Group	12	Yangzhou Jingdu	19
Berkenhoff	13	Schuhmann	21
Dupont	14/15/16	Waffenschmidt	22
Yangzhou Jingdu	18	Paggin	23
Bizzotto	20	SOVB	23
Waffenschmidt	22	Yongli	24
Paggin	23	GDF	25
SOVB	23	Marco Kracht	25
Yongli	24	FEIBP	26
GDF	25	Roth	27
Marco Kracht	25	ABMA	28
Roth Composite Machinery	27	Brush Expert	IBC
		Boucherie Borghi Group	BC



100 years EBSER, life is full of surprises.

At EBSER, we love these exciting, unpredictable, spectacular facets of life. That is why we have been developing and producing machines for the brush industry in Todtnau / Germany since 1920. Machines with trendsetting technologies, intelligent solutions and outstanding quality. In 1920, Gottlieb Ebser started building hand tufting machines for the brush industry in Todtnau. Over the decades, the program has been steadily expanded. Semi-automatic and later fully automatic drilling and tufting machines as well as trimming machines were developed and added.



- Trimming- / cleaning machines
- Stamping- / labelling machine
- Drilling and tufting machines
- Special machines
- EBSER second-hand machines

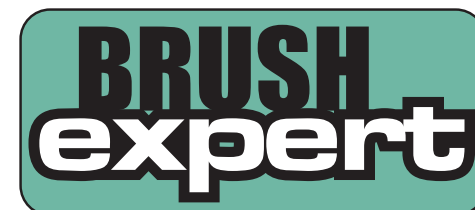


See you at INTERBRUSH 2022

Fon: +49 7671 992308-0 | info@ebser.de | www.ebser.de



# www.brushexpert.com – The Ultimate Industry Reference



The **ULTIMATE** industry reference

In 2020 **www.brushexpert.com** is celebrating its 20th Anniversary. The original concept for the site was, and still is, to provide an available-to-all directory, news service and general information portal to meet the industry's growing need for a flexible online, one-stop platform.

## The Brush Directory is the place to be seen!

Receiving the most visitors of all pages of **www.brushexpert.com**, the Brush Directory offers:

- Volume buyers, industrial users, distributors and companies needing custom-made items a direct route to manufacturers of all types of Finished Brushes on a global basis.
- Brush manufacturers across all industries a means of sourcing suppliers of the different Component Parts and raw materials required to enable them to create the best possible brush products
- All manufacturers, whether of finished brushes or their numerous components, the very best in Machinery technology from international companies with which to realise all of their projects.
- Access to the important Associations in many countries that support the efforts of their members

## ① Stay current with the latest News!

Our popular online News pages and twice-monthly Newsletter offer the visitors the very latest Product, Company and Industry news from the around the globe. Sign up to receive the Newsletter and keep up-to-date with the latest product innovations, company developments and industry events. **www.brushexpert.com/news**

## Information at your fingertips!

With a worldwide Shows & Events calendar, details of industry Associations and a continuously updated Trade Statistics database and more, **www.brushexpert.com** really is your go-to planning resource for the brush industry

## Promote your company!

## Grow your brand!

## Network within the industry!

Subscribe today to elevate your web presence for just £170.00 GBP for a full year of enhanced benefits.

## Annual Subscription

② **Networking** - Enhanced Company Profile page example showing web/email/social media links, full description, accreditations, logo and image gallery plus links to your major personnel and worldwide agents.

**Directory** – Subscribers shown at top of each product list with each listing showing a link to email/web/social media  
**Promotion** - Unlimited editorial space in our News pages, twice-monthly Newsletter and social media channels with each article linked to your email, website and enhanced company page

## ③ Advertise within the many pages of www.brushexpert.com

**www.brushexpert.com** receives thousands of visitors from all over the world. This necessary resource is an ideal networking tool and an important promotional opportunity.

Choose from a variety of options to meet your specific budget requirements including online animated banners placed throughout the site, an advertisement in your company directory page and pop-up adverts in the Brush Directory in your product selection.

Show your links from the Video Gallery or Product Portfolio pages.

Advertise excess stock, used machinery or search for agents/staff in the Marketplace.

Use our e-Blast service to bring maximum focus to your key promotions, product launches or company changes in a dedicated mailing package.

Add your advertising banner and editorial (to be shown as Main Story) to one of our Newsletters for greatest impact.



**Left: Josie Wadd, Director, Brush Expert Ltd**

## Contact us

Whether you wish to discuss subscriptions, sharing your news item

or annual advertising plans, Contact Us today. We are here to answer your questions and assure you of a very quick reply.

Download the Media Pack today and to find out how you can take advantage of the wide, global reach this popular and well-respected platform provides.

**Brush Expert Ltd**  
**www.brushexpert.com**

**Tel: +44 (0)1604 648401**  
**info@brushexpert.com**  
**For general enquiries**

**Josie Wadd**  
**josie@brushexpert.com**  
**For advertising and promotion enquiries**

**Alice Castle**  
**alice@brushexpert.com**  
**For editorial enquiries**



# *The Ultimate Industry Reference!*

info@brushexpert.com

